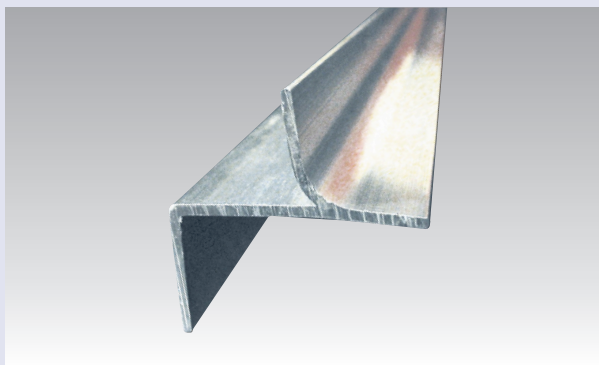


CLIMAVER® Accesories

CLIMAVER® profiles and tapes

The CLIMAVER® ducts are resistant to the most aggressive mechanical cleaning methods. For those cases where frequent cleaning of the ducts is required, ISOVER have designed the CLIMAVER® Pro with metal profiles. This system can be applied to all the panels in the range: it consists of adding L-aluminium profiles to the longitudinal edges of the ducts. Therefore, the longitudinal edges are protected. H-profiles were designed in order to facilitate access and inspection, guaranteeing the watertightness and quality of the ducts.



Perfiver L

- Extruded aluminium profile, 1.155 m long
- Designed for panel cuts for scarf joint folds
- Approximate thickness: 1.0 mm

Application

- CLIMAVER® Pro with metal profiles ducts
- They are installed on the longitudinal edges of the ducts, ensuring that they can be cleaned and increasing their rigidity

Presentation

- Pack of 80 profiles
- 1.155 m long profile



Perfiver h

- Extruded, h-shaped aluminium profile, 2.00 m long
- Approximate thickness: 1.1 mm

Application

- Specially designed for inspection doors or panels, connections to machine and/or grids or diffusers

Presentation

- Pack of 20 profiles
- 2.00 m long profile



ISOVER
SAINT-GOBAIN



CLIMAVER® profiles and tapes

CLIMAVER® Tape

- Aluminium tape
- 63 mm wide, 50 micra thick
- The Word CLIMAVER® is printed along the tape as a guarantee of quality

Application

- To construct CLIMAVER® self-supporting ducts with exposed aluminium exterior facing
- Ensures the watervapour barrier of the duct
- To be applied in temperatures above 0 °C

Presentation

- Roll of pure aluminium
- 63 mm wide, 50 m long
- In boxes of 12 rolls



CLIMAVER® Neto Tape

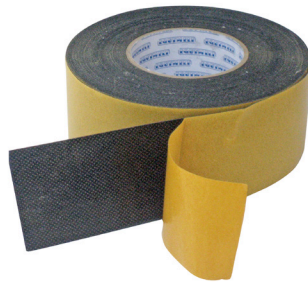
- Black acrylic resin adhesive tape
- 63 mm wide

Application

- Sealing CLIMAVER® Neto ducts
- To be applied in temperatures above 0 °C

Presentation

- Black roll
- 63 mm wide, 50 m long
- In boxes of 12 rolls



CLIMAVER® A2 Deco Tape

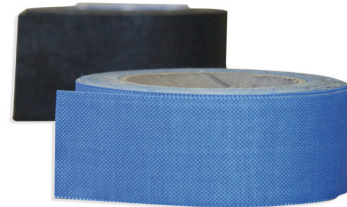
- Acrylic resin tape for exterior facing of CLIMAVER® Deco ducts
- 63 mm wide

Application

- Sealing CLIMAVER® A2 Deco ducts
- Ensures the watervapour barrier of the duct
- To be applied in temperatures above 0 °C

Presentation

- 63 mm wide, 55 m long
- 1 roll
- Colors: blue, gray, green, black and red



www.isover-technical-insulation.com

The technical information corresponds to our present state of knowledge and experience at the date of printing (see imprint). But no legal guarantee can be given, unless it has been explicitly agreed. The state of experience and knowledge is developing continuously. Please see to it that you always use the latest edition of this information. The described product applications do not take special circumstances in consideration. Please verify whether our products are appropriate for the concrete application. For further information please contact our ISOVER sales offices. We deliver only according to our terms of trade and terms of delivery.

ISOVER
SAINT-GOBAIN