



EC TYPE EXAMINATION (MODULE B)

CERTIFICATE No. MED264119CS

***This is to certify*** that RINA Services S.p.A. (Notified Body No. 0474) did undertake the relevant type approval procedures for the equipment identified below, which was found to be in compliance with the Fire Protection requirements of Marine Equipment Directive (MED) 2014/90/EU, including the requirements and testing standards of Regulation (EU) 2019/1397.

<i>MED Item N°</i>	<b>MED/3.11a</b>
<i>USCG Category N°</i>	<b>164.107</b>
<i>Description</i>	<b>'A' and 'B' Class divisions fire integrity: (a) 'A' Class divisions</b>
<i>Type</i>	<b>ULTIMATE A-30 BULKHEAD - STEEL</b>
<i>Applicant</i>	<b>SAINT-GOBAIN ISOVER G+H AG</b> BURGERMEISTER-GRUNZWEIG-STRASSE 1 67059 Ludwigshafen GERMANY
<i>Testing standards</i>	<b>IMO Res. MSC.307(88)-(2010 FTP Code)</b>
<i>Reference standards</i>	<b>Chap. II-2 of SOLAS 74 Convention, as amended, RINA Rules for the certification of Marine Equipment</b>

*Issued in Genoa on*  
February 17, 2020

*This Certificate is valid until*  
February 16, 2025

*This Certificate consists of this sheet plus an attachment*

**Enrico Cabella**  
RINA Services S.p.A.

***This document is a copy of a digitally signed file available on Rina Web Site: <http://www.rina.org>***



**ATTACHMENT TO  
CERTIFICATE No. MED264119CS**

Page 1 of 2

*Manufacturer*

**SAINT-GOBAIN ISOVER G+H**

*Place of Manufacturer*

INDUSTRIESTRASSE 11  
19386 LUEBZ  
GERMANY

**A30 Bulkhead, Steel - Construction 1**

**Description**

Steel bulkhead whose structural core is insulated with one layer of mineral wool type U SeaProtect, having density of minimum  $36 \text{ kg/m}^3$  and a thickness of minimum 60 mm between the stiffeners and with one layer of mineral wool type U SeaProtect, having a density of minimum  $36 \text{ kg/m}^3$  and a thickness of minimum 60 mm around the stiffeners.

**Products**

The following mineral wool types may be used:

U SeaProtect Roll 36 Alu1, Roll 36 G220, Roll 36, Roll 36 V1 yellow, Roll 36 V1 black, Roll 36 X, Slab 36 Alu1, Slab 36 B-Al, Slab 36 B-Gl, Slab 36 G120, Slab 36 G220, Slab 36 G420, Slab 36, Slab 36 V1, Slab 36 X, Wired Mat 36, Wired Mat 36 V1, Wired Mat 36 Alu1.

**Field of application**

General application - Fire against either side.

**Reference document**

Saint Gobain Isover drawings No. AK2223 Rev. 05 dated 24 June 2015 approved on 29 July 2015 with endorsement No. LABS-1122.

**Tests carried out**

Test as per RINA Test Laboratory report No. 2004CS015078/5 issued on 3 March 2005 according to IMO Res. A.754(18).



**ATTACHMENT TO  
CERTIFICATE Nr. MED229915CS/003**

Page 2 of 3

**A30 Bulkhead, Steel - Construction 2**

### **Description**

Steel bulkhead whose structural core is insulated with one layer of mineral wool type USeaProtect, having density of minimum  $36 \text{ kg/m}^3$  and a thickness of minimum 60 mm between the stiffeners and with one layer of mineral wool type USeaProtect, having a density of minimum  $66 \text{ kg/m}^3$  and a thickness of minimum 30 mm around and below the stiffeners.

### **Products**

The following mineral wool types may be used for the structural core:

USeaProtect Roll 36 Alu1, Roll 36 G220, Roll 36, Roll 36 V1 yellow, Roll 36 V1 black, Roll 36 X, Slab 36 Alu1, Slab 36 B-Al, Slab 36 B-Gl, Slab 36 G120, Slab 36 G220, Slab 36 G420, Slab 36, Slab 36 V1, Slab 36 X, Wired Mat 36, Wired Mat 36 V1, Wired Mat 36 Alu1.

The following mineral wool types may be used for the stiffeners:

USeaProtect Slab 66 Alu1, Slab 66 B-Al, Slab 66 B-Gl, Slab 66 G120, Slab 66 G220, Slab 66 G420, Slab 66, Slab 66 V1, Slab 66 X, Wired Mat 66, Wired Mat 66 V1, Wired Mat 66 Alu1.

### **Field of application**

General application - Fire against either side.

### **Reference document**

Saint Gobain Isover drawings No. AK2224 Rev. 05 dated 24 June 2015 approved on 29 July 2015 with endorsement No. LABS-1123.

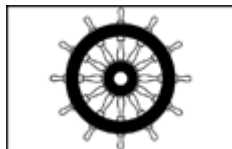
### **Tests carried out**

Test as per RINA Test Laboratory report No. 2004CS015078/5 issued on 3 March 2005 according to IMO Res. A.754(18).

This certificate annuls and replaces the certificate No. MED229915CS/003 dated 07/29/2015 due to renewal.

***This document is a copy of a digitally signed file available on Rina Web Site: <http://www.rina.org>***

*The mark of conformity may only be affixed to the above type approved equipment and a Manufacturer's Declaration of Conformity issued when the production control phase module (D, E or F) of Annex II of the Directive is fully complied with a written inspection agreement with a Notified Body*



XXXX/YYYY

**"WHEELMARK FORMAT"**

XXXX      *Notified Body number undertaking surveillance module*

YY         *Last two digits of year mark affixed*

**USCG Approval**

This product has been assigned a U.S. Coast Guard module B number (*USCG number: 164.107/EC0474*) to note type approval to Module B only as it pertains to obtaining U.S. Coast Guard approval as allowed by the "Agreement between the European Community and the United States of America on Mutual Recognition of Certificates of Conformity for Marine Equipment" as amended by Decision N. 1/2018 signed on 18th February 2019.

The manufacturer is allowed to affix the U.S. Coast Guard approval number to the above equipment subject to the authorization of the Notified Body undertaking the surveillance module.

---

***General conditions for the approval***

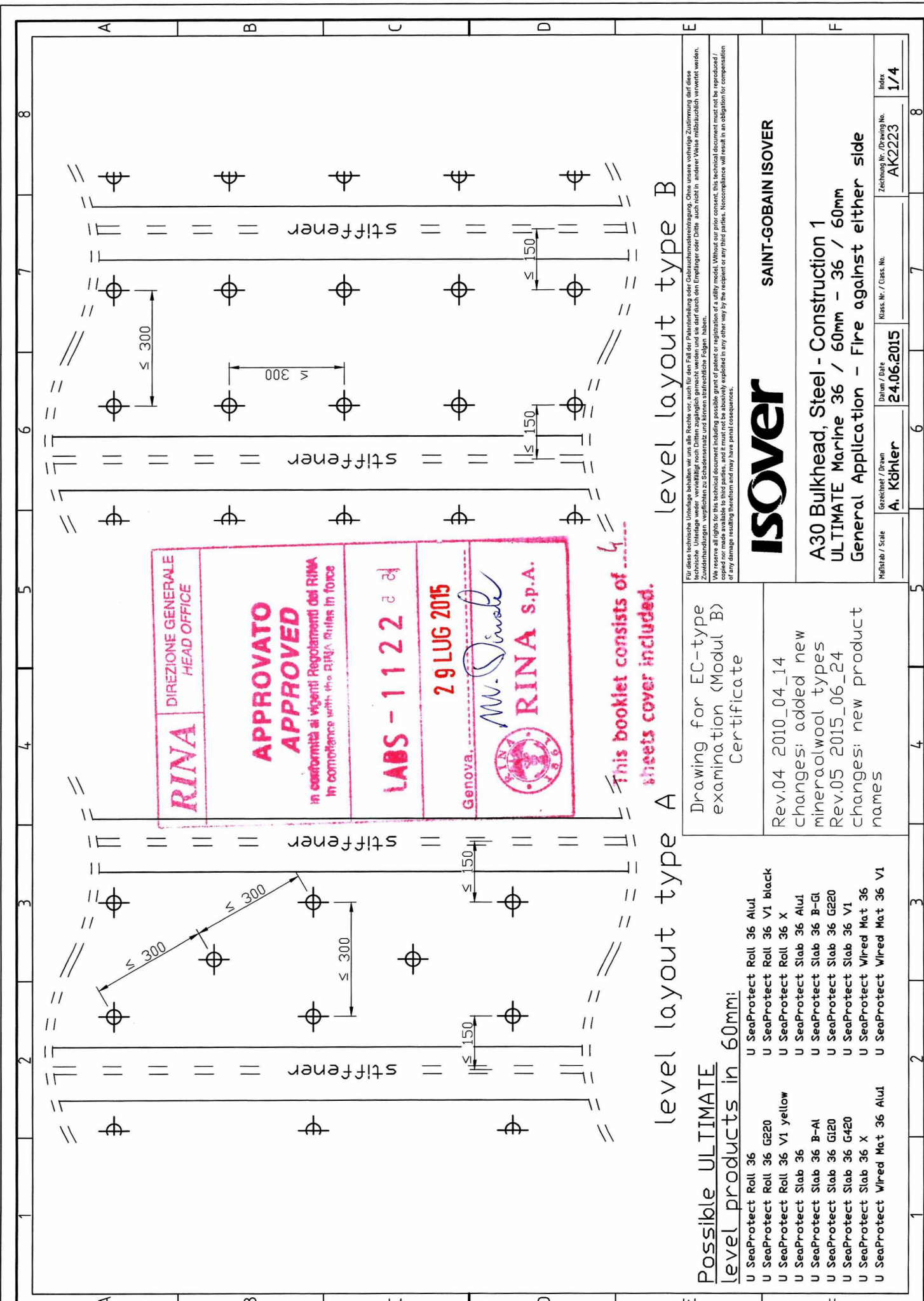
- a) The initial conditions verified by RINA at the time of the approval are to be maintained
- b) Any changes to the initial conditions are to be promptly communicated to RINA, which reserves the right to repeat the relevant assessment
- c) This certificate will no be valid if the manufacturer makes any changes or modifications to the approved equipment, which have not been notified to, and agreed with RINA
- d) RINA personnel are to be allowed to witness during the performances of activities, upon their request
- e) The activities are to be carried out in compliance with the RINA Rules and/or other applicable Rules
- f) Should the specified regulations or standards be amended during the validity of this certificate, the product is to be reapproved prior to it being placed on board vessels to which the amended regulations or standards apply.



---

**Enrico Cabella**

***This document is a copy of a digitally signed file available on Rina Web Site: <http://www.rina.org>***



**RINA** DIREZIONE GENERALE HEAD OFFICE

**APPROVATO APPROVED**  
 in conformità ai vigenti Regolamenti del RINA  
 In compliance with the RINA Rules in force

**LABS - 1122**

29 LUG 2015

Genova, *M. Siroli*  
**RINA S.P.A.**

This booklet consists of 4 sheets cover included.

level layout type A

level layout type B

Für diese technische Unterlage behalten wir uns alle Rechte vor, auch für den Fall der Patentierung oder Gebrauchsmusteranmeldung. Ohne unsere vorherige Zustimmung darf diese technische Unterlage weder, vollständig noch Dritten zugänglich gemacht werden und sie darf durch den Empfänger oder Dritte, auch nicht in anderer Weise missbräuchlich verwendet werden. Zuwiderhandlungen verpflichten zu Schadensersatz und können strafrechtliche Folgen haben.

We reserve all rights for this technical document including possible grant of patent or registration of a utility model. Without our prior consent, this technical document must not be reproduced / copied or made available to third parties, and it must in no way be adversely exploited in any other way by the recipient or any third parties. Noncompliance will result in an obligation for compensation of any damage resulting therefrom and may have penal consequences.

Drawing for EC-type examination (Modul B) Certificate

- Possible **ULTIMATE** level products in 60mm:
- U SeaProtect Roll 36
  - U SeaProtect Roll 36 G220
  - U SeaProtect Roll 36 V1 yellow
  - U SeaProtect Slab 36
  - U SeaProtect Slab 36 B-AI
  - U SeaProtect Slab 36 GI20
  - U SeaProtect Slab 36 G420
  - U SeaProtect Slab 36 X
  - U SeaProtect Wired Mat 36 AluI
  - U SeaProtect Roll 36 AluI
  - U SeaProtect Roll 36 V1 black
  - U SeaProtect Roll 36 X
  - U SeaProtect Slab 36 AluI
  - U SeaProtect Slab 36 B-GI
  - U SeaProtect Slab 36 G220
  - U SeaProtect Slab 36 V1
  - U SeaProtect Wired Mat 36 V1

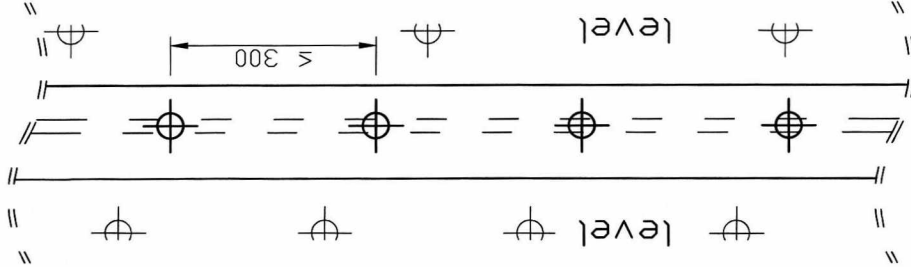
**ISOVER** SAINT-GOBAIN ISOVER

**A30 Bulkhead, Steel - Construction 1**  
**ULTIMATE Marine 36 / 60mm - 36 / 60mm**  
 General Application - Fire against either side

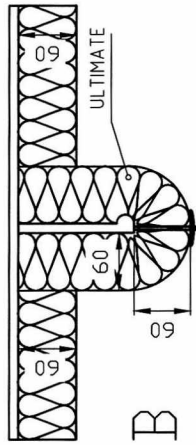
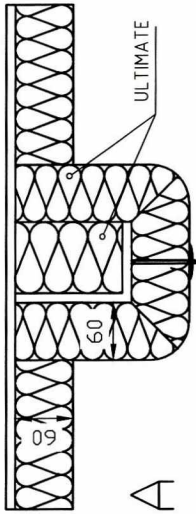
Maßstab / Scale	Gezeichnet / Drawn	Datum / Date	Klass. Nr. / Class. No.	Zeichnung Nr. / Drawing No.	Index
	A. Köhler	24.06.2015		AK2223	1/4



top view

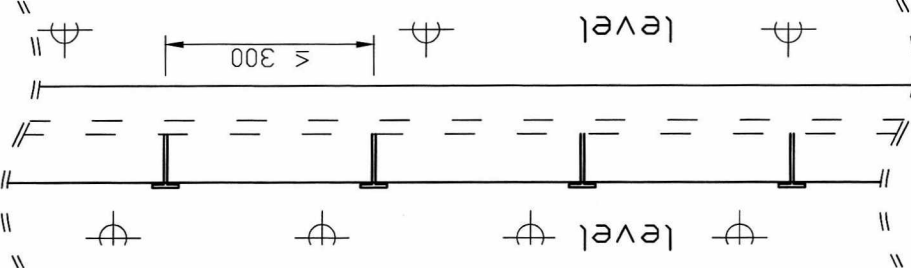


section

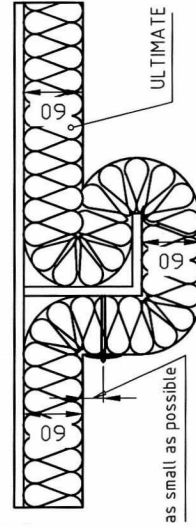


stiffener up to 100mm

top view



section



stiffener up to 150mm

LABS-MRE



2/4

### Possible ULTIMATE

### stiffener products in 60mm:

- U SeaProtect Roll 36
- U SeaProtect Roll 36 G220
- U SeaProtect Roll 36 V1 yellow
- U SeaProtect Slab 36
- U SeaProtect Slab 36 B-Al
- U SeaProtect Slab 36 G120
- U SeaProtect Slab 36 G420
- U SeaProtect Slab 36 X
- U SeaProtect W/rod Mat 36 Alu1
- U SeaProtect Roll 36 Alu1
- U SeaProtect Roll 36 V1 black
- U SeaProtect Roll 36 X
- U SeaProtect Slab 36 Alu1
- U SeaProtect Slab 36 B-Gl
- U SeaProtect Slab 36 G220
- U SeaProtect Slab 36 V1
- U SeaProtect W/rod Mat 36
- U SeaProtect W/rod Mat 36 V1

Drawing for EC-type examination (Modul B) Certificate

Rev.04 2010\_04\_14

changes: added new mineralwool types  
Rev.05 2015\_06\_24  
changes: new product names

# ISOVER

SAINT-GOBAIN ISOVER

A30 Bulkhead, Steel - Construction 1  
ULTIMATE Marine 36 / 60mm - 36 / 60mm  
General Application - Fire against either side

Maßstab / Scale

Gezeichnet / Drawn  
**A. Köhler**

Datum / Date  
**24.06.2015**

Klass. Nr. / Class. No.

Zeichnung Nr. / Drawing No.  
**AK2223**

Index  
**2/4**

1

2

3

4

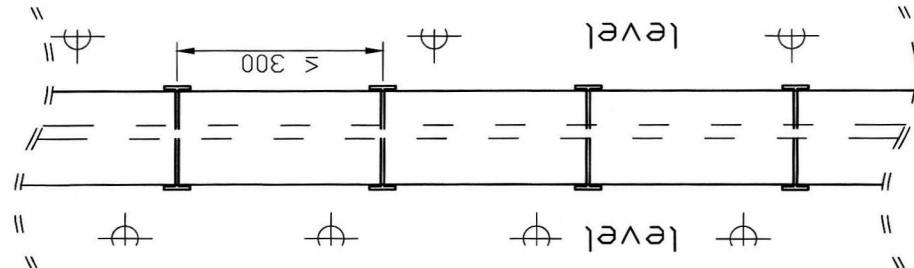
5

6

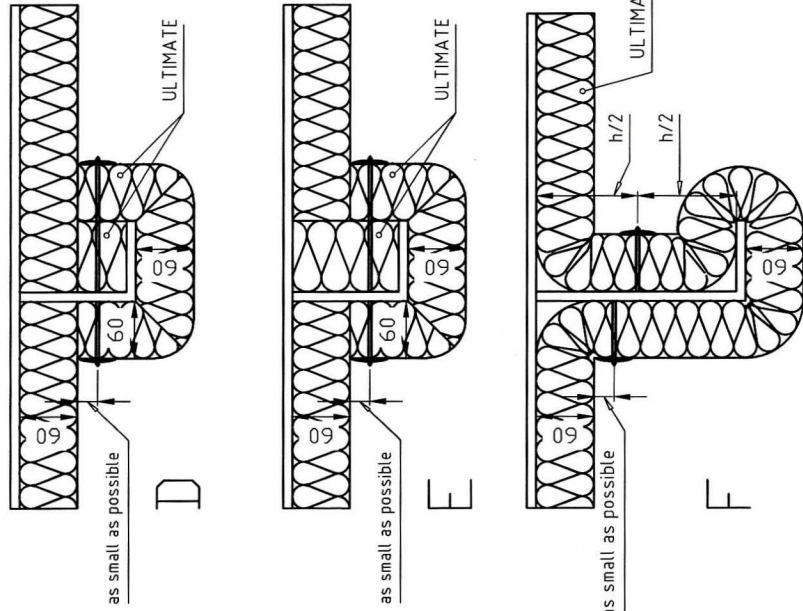
7

8

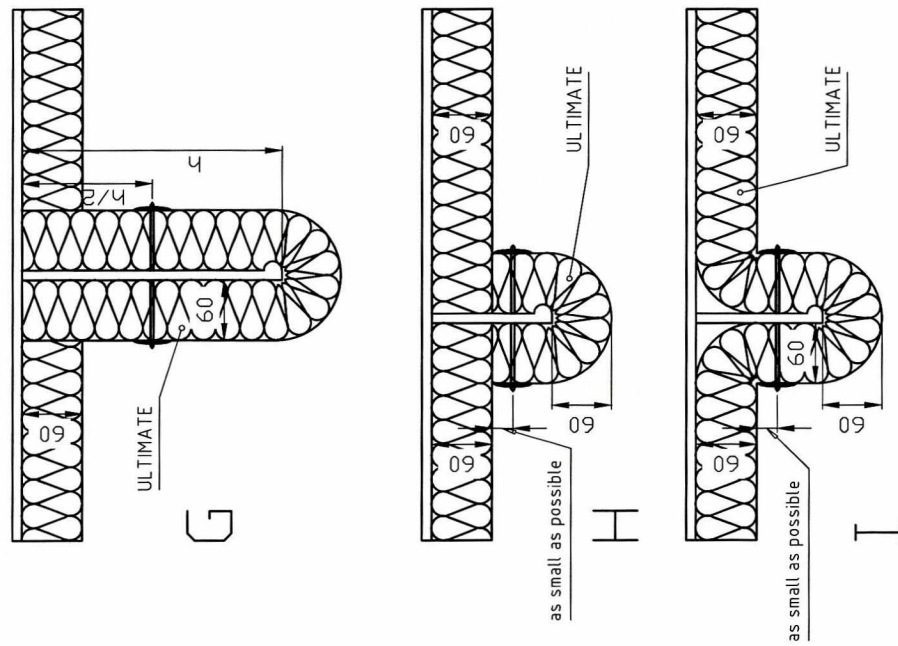
top view



section



section



**Possible ULTIMATE stiffener products in 60mm:**

- U SeaProtect Roll 36
- U SeaProtect Roll 36 G220
- U SeaProtect Roll 36 V1 yellow
- U SeaProtect Slab 36
- U SeaProtect Slab 36 B-Al
- U SeaProtect Slab 36 G120
- U SeaProtect Slab 36 G420
- U SeaProtect Slab 36 X
- U SeaProtect Wired Mat 36 Alu1
- U SeaProtect Roll 36 Alu1
- U SeaProtect Roll 36 V1 black
- U SeaProtect Roll 36 X
- U SeaProtect Slab 36 Alu1
- U SeaProtect Slab 36 B-GI
- U SeaProtect Slab 36 G220
- U SeaProtect Slab 36 V1
- U SeaProtect Wired Mat 36
- U SeaProtect Wired Mat 36 V1

Drawing for EC-type examination (Modul B) Certificate

Rev.04 2010\_04\_14  
 changes: added new mineralwool types  
 Rev.05 2015\_06\_24  
 changes: new product names

Für diese technische Unterlage behalten wir uns alle Rechte vor, auch für den Fall der Fälschung oder Gebrauchsunterstützung. Ohne unsere vorherige Zustimmung darf diese technische Unterlage weder vervielfältigt noch Dritten zugänglich gemacht werden und sie darf durch den Empfänger oder Dritte auch nicht in anderer Weise missbräuchlich verwendet werden. Zuwiderhandlungen verpflichten zu Schadensersatz und können strafrechtliche Folgen haben.  
 We reserve all rights for this technical document including possible grant of patent or registration of a utility model. Without our prior consent, this technical document must not be reproduced / translated or otherwise made available in any other way by the recipient or any third parties. Noncompliance will result in an obligation for compensation of any damage resulting therefrom and may have penal consequences.

**ISOVER** SAINT-GOBAIN ISOVER

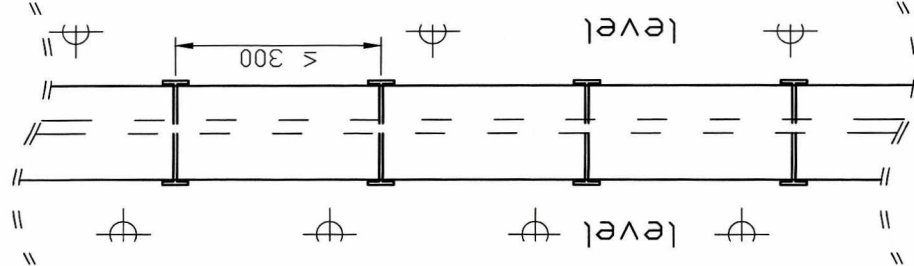
A30 Bulkhead, Steel - Construction 1  
 ULTIMATE Marine 36 / 60mm - 36 / 60mm  
 General Application - Fire against either side

Maßstab / Scale	Gezeichnet / Drawn	Datum / Date	Klass. Nr. / Class. No.	Zeichnung Nr. / Drawing No.	Index
	A. Köhler	24.06.2015		AK2223	3/4

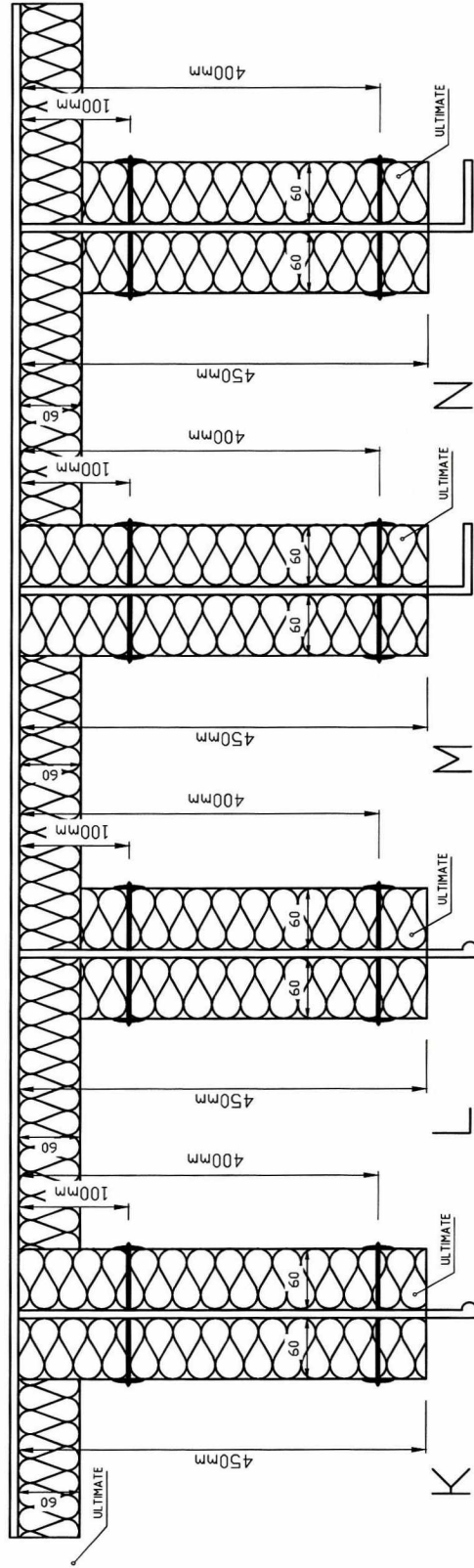




top view



section



stiffener bigger than 450mm



**Possible ULTIMATE**

**stiffener products in 60mm:**

- U SeaProtect Roll 36
- U SeaProtect Roll 36 G220
- U SeaProtect Roll 36 V1 yellow
- U SeaProtect Slab 36
- U SeaProtect Slab 36 B-Al
- U SeaProtect Slab 36 G120
- U SeaProtect Slab 36 G420
- U SeaProtect Slab 36 X
- U SeaProtect Wired Mat 36 AluI
- U SeaProtect Roll 36 AluI
- U SeaProtect Roll 36 V1 black
- U SeaProtect Roll 36 X
- U SeaProtect Slab 36 AluI
- U SeaProtect Slab 36 B-GI
- U SeaProtect Slab 36 G220
- U SeaProtect Slab 36 V1
- U SeaProtect Wired Mat 36
- U SeaProtect Wired Mat 36 V1

Drawing for EC-type  
examination (Modul B)  
Certificate

Rev.04 2010\_04\_14

changes: added new  
mineralwool types  
Rev.05 2015\_06\_24  
changes: new product  
names

**ISOVER**

SAINT-GOBAIN ISOVER

**A30 Bulkhead, Steel - Construction 1**  
**ULTIMATE Marine 36 / 60mm - 36 / 60mm**  
**General Application - Fire against either side**

Maßstab / Scale

Gerechnet / Drawn

Datum / Date

Klass. Nr. / Class. No.

Zeichnung Nr. / Drawing No.

Index

5

6

7

8

AK2223

4/4

24.06.2015

A. Köhler

24.06.2015

4/4

AK2223

24.06.2015

A. Köhler

24.06.2015

4/4

AK2223

24.06.2015

A. Köhler

24.06.2015

4/4

AK2223

24.06.2015

A. Köhler

24.06.2015

4/4

AK2223

24.06.2015

A. Köhler

24.06.2015

4/4

AK2223

24.06.2015

A. Köhler

24.06.2015

4/4

AK2223

24.06.2015

A. Köhler

24.06.2015

4/4

AK2223

24.06.2015

A. Köhler

24.06.2015

4/4

AK2223

24.06.2015

A. Köhler

24.06.2015

4/4

AK2223

24.06.2015

A. Köhler

24.06.2015

4/4

AK2223

24.06.2015

A. Köhler

24.06.2015

4/4

AK2223

24.06.2015

A. Köhler

24.06.2015

4/4

AK2223

24.06.2015

A. Köhler

24.06.2015

4/4

AK2223

24.06.2015

A. Köhler

24.06.2015

4/4

AK2223

24.06.2015

A. Köhler

24.06.2015

4/4

AK2223

24.06.2015

A. Köhler

24.06.2015

4/4

AK2223

24.06.2015

A. Köhler

24.06.2015

4/4

AK2223

24.06.2015

A. Köhler

24.06.2015

4/4

AK2223

24.06.2015

A. Köhler

24.06.2015

4/4

AK2223

24.06.2015

A. Köhler

24.06.2015

4/4

AK2223

24.06.2015

A. Köhler

24.06.2015

4/4

AK2223

24.06.2015

A. Köhler

24.06.2015

4/4

AK2223

24.06.2015

A. Köhler

24.06.2015

4/4

AK2223

24.06.2015

A. Köhler

24.06.2015

4/4

AK2223

24.06.2015

A. Köhler

24.06.2015

4/4

AK2223

24.06.2015

A. Köhler

24.06.2015

4/4

AK2223

24.06.2015

A. Köhler

24.06.2015

4/4

AK2223

24.06.2015

A. Köhler

24.06.2015

4/4

AK2223

24.06.2015

A. Köhler

24.06.2015

4/4

AK2223

24.06.2015

A. Köhler

24.06.2015

4/4

AK2223

24.06.2015

A. Köhler

24.06.2015

4/4

AK2223

24.06.2015

A. Köhler

24.06.2015

4/4

AK2223

24.06.2015

A. Köhler

24.06.2015

4/4

AK2223

24.06.2015

A. Köhler

24.06.2015

4/4

AK2223

24.06.2015

A. Köhler

24.06.2015

4/4

AK2223

24.06.2015

A. Köhler

24.06.2015

4/4

AK2223

24.06.2015

A. Köhler

24.06.2015

4/4

AK2223

24.06.2015

A. Köhler

24.06.2015

4/4

AK2223

24.06.2015

A. Köhler

24.06.2015

4/4

AK2223

24.06.2015

A. Köhler

24.06.2015

4/4

AK2223

24.06.2015

A. Köhler

24.06.2015

4/4

AK2223

24.06.2015

A. Köhler

24.06.2015

4/4

AK2223

24.06.2015

A. Köhler

24.06.2015

4/4

AK2223

24.06.2015

A. Köhler

24.06.2015

4/4

AK2223

24.06.2015

A. Köhler

24.06.2015

4/4

AK2223

24.06.2015

A. Köhler

24.06.2015

4/4

AK2223

24.06.2015

A. Köhler

24.06.2015

4/4

AK2223

24.06.2015

A. Köhler

24.06.2015

4/4

AK2223

24.06.2015

A. Köhler

24.06.2015

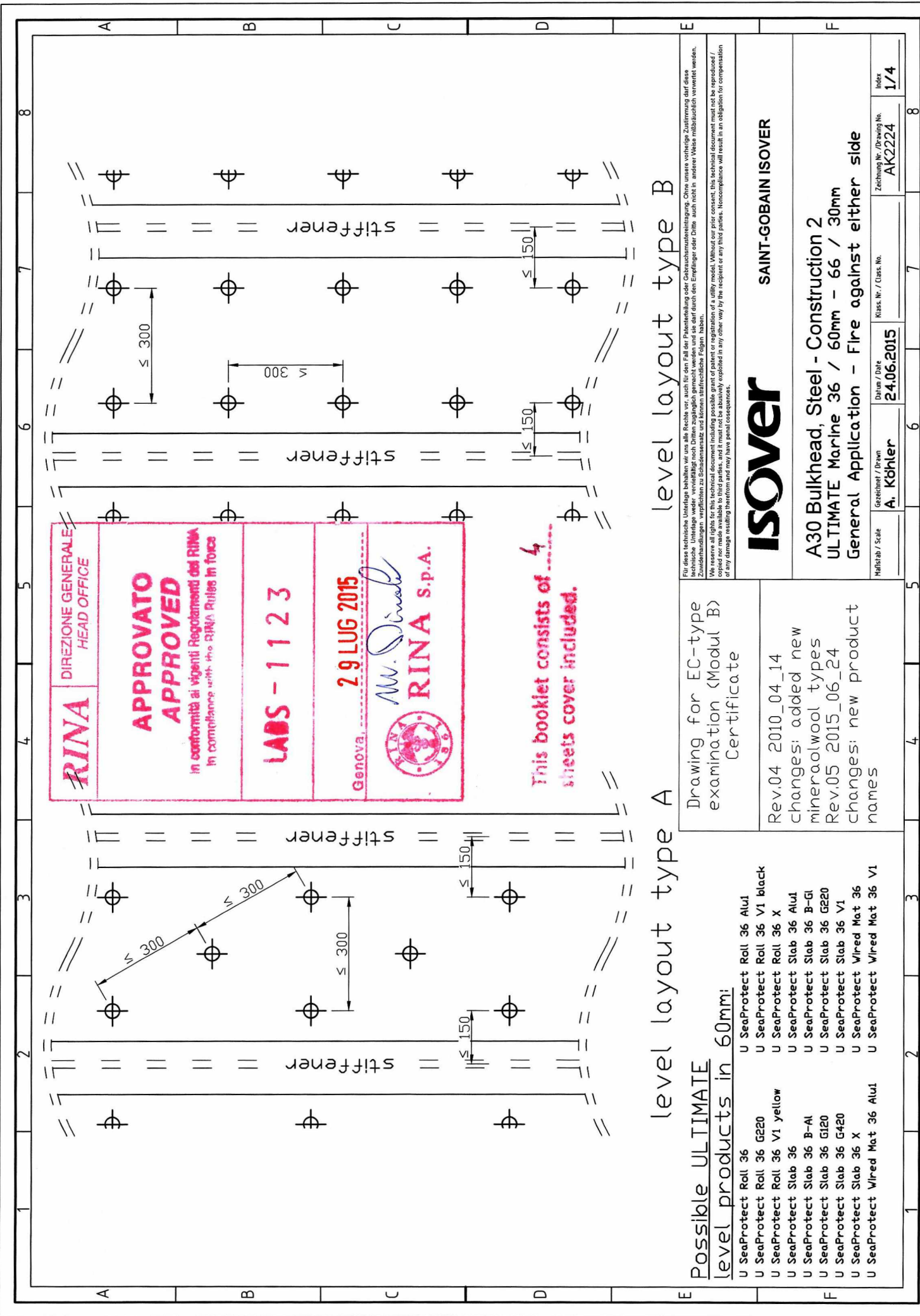
4/4

AK2223

24.06.2015

A. Köhler





**RINA** DIREZIONE GENERALE HEAD OFFICE

**APPROVATO APPROVED**  
in conformità ai vigenti Regolamenti del RINA  
in compliance with the RINA Rules in force

**LADS - 1123**

Genova **29 LUG 2015**  
*M. Dinali*  
**RINA S.P.A.**

**This booklet consists of 4 sheets cover included.**

level layout type A

level layout type B

- Possible ULTIMATE level products in 60mm:**
- U SeaProtect Roll 36
  - U SeaProtect Roll 36 G220
  - U SeaProtect Roll 36 V1 yellow
  - U SeaProtect Slab 36
  - U SeaProtect Slab 36 B-Al
  - U SeaProtect Slab 36 G120
  - U SeaProtect Slab 36 G420
  - U SeaProtect Slab 36 X
  - U SeaProtect Wired Mat 36 AluI
  - U SeaProtect Roll 36 AluI
  - U SeaProtect Roll 36 V1 black
  - U SeaProtect Roll 36 X
  - U SeaProtect Slab 36 AluI
  - U SeaProtect Slab 36 B-GI
  - U SeaProtect Slab 36 G220
  - U SeaProtect Slab 36 V1
  - U SeaProtect Wired Mat 36
  - U SeaProtect Wired Mat 36 V1

Drawing for EC-type examination (Modul B) Certificate

Rev.04 2010\_04\_14  
changes: added new mineralwool types  
Rev.05 2015\_06\_24  
changes: new product names

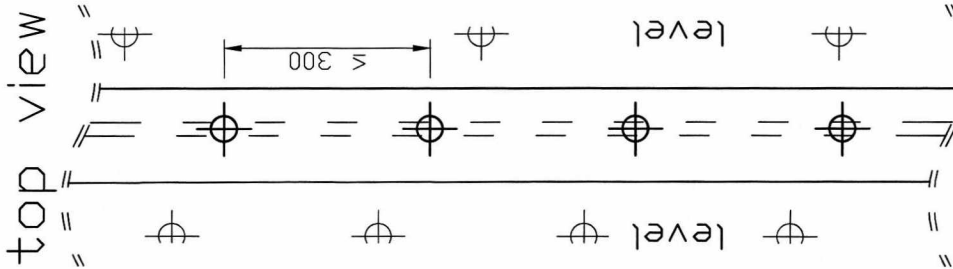
**ISOVER**

SAINT-GOBAIN ISOVER

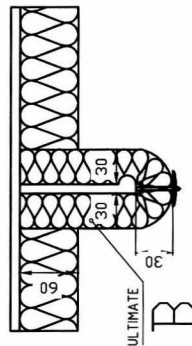
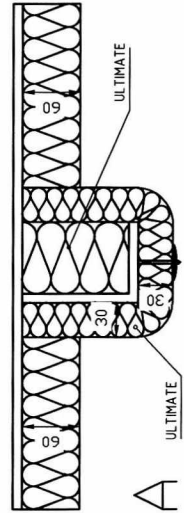
**A30 Bulkhead, Steel - Construction 2**  
**ULTIMATE Marine 36 / 60mm - 66 / 30mm**  
General Application - Fire against either side

Modellstab / Scale	Gezeichnet / Drawn	Datum / Date	Klass. Nr. / Class. No.	Zeichnung Nr. / Drawing No.	Index
	A. Köhler	24.06.2015		AK2224	1/4

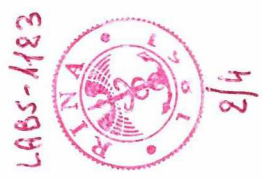
Für diese technische Unterlage behalten wir uns alle Rechte vor, auch für den Fall der Patenterteilung oder Gebrauchsmustererteilung. Ohne unsere vorherige Zustimmung darf diese technische Unterlage weder, vervielfältigt noch Dritten zugänglich gemacht werden und sie darf durch den Empfänger oder Dritte auch nicht in anderer Weise mündlich oder schriftlich weitergegeben werden. Wir reservieren uns alle Rechte an diesem Patent, und es darf nicht ohne schriftliche Erlaubnis in irgendeiner Weise kopiert, reproduziert oder in irgendeiner Weise veröffentlicht werden. Non-compliance will result in an obligation for compensation of any damage resulting therefrom and may have penal consequences.



section



stiffener up to 100mm



**Possible ULTIMATE**

**stiffener products in 30mm:**

- U SeaProtect Slab 66
- U SeaProtect Slab 66 B-AI
- U SeaProtect Slab 66 G120
- U SeaProtect Slab 66 G420
- U SeaProtect Slab 66 X
- U SeaProtect Wired Mat 66 AluI
- U SeaProtect Slab 66 AluI
- U SeaProtect Slab 66 B-GI
- U SeaProtect Slab 66 G220
- U SeaProtect Slab 66 V1
- U SeaProtect Wired Mat 66
- U SeaProtect Wired Mat 66 V1

Drawing for EC-type  
examination (Modul B)  
Certificate

Rev.04 2010\_04\_14  
changes: added new  
mineralwool types  
Rev.05 2015\_06\_24  
changes: new product  
names

**ISOVER**

**SAINT-GOBAIN ISOVER**

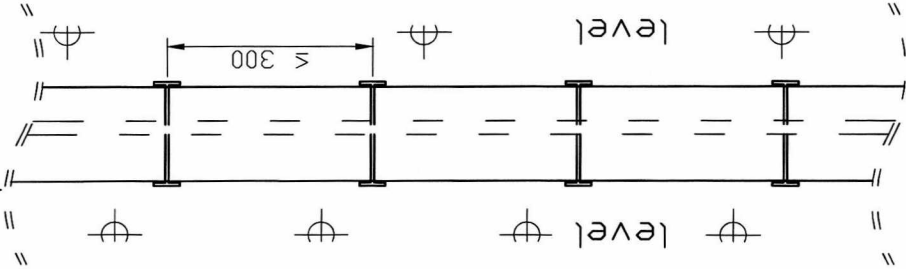
**A30 Bulkhead, Steel - Construction 2**  
**ULTIMATE Marine 36 / 60mm - 66 / 30mm**  
**General Application - Fire against either side**

Mäßstab / Scale	Gezeichnet / Drawn	Datum / Date	Klass. Nr. / Class. No.	Zeichnung Nr. / Drawing No.	Index
	A. Köhler	24.06.2015		AK2224	2/4

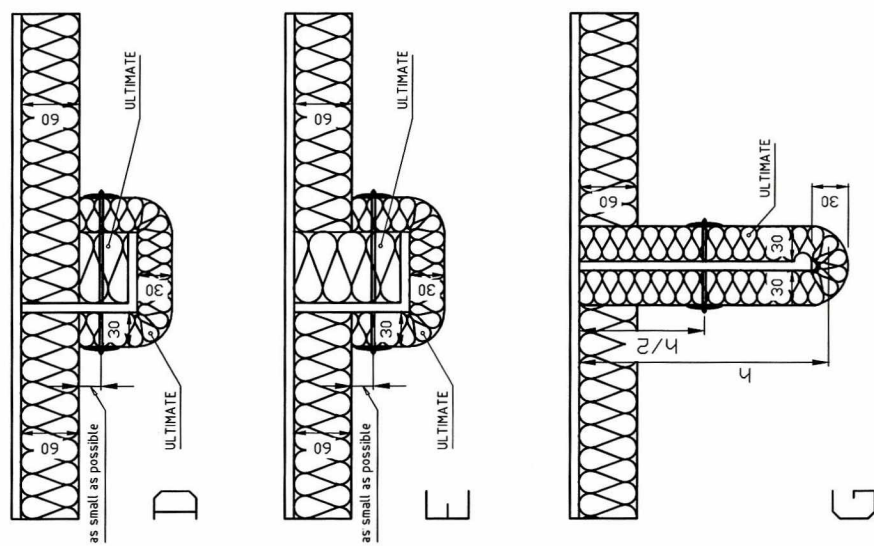
Für diese technische Unterlage behalten wir uns alle Rechte vor, auch für den Fall der Patentanmeldung oder Gebrauchsmustereingtragung. Ohne unsere vorherige Zustimmung darf diese technische Unterlage weder vervielfältigt noch Dritten zugänglich gemacht werden und sie darf durch den Empfänger oder Dritte auch nicht in anderer Weise missbräuchlich verwendet werden. Zuwendungen verpflichten zu Schadensersatz und können strafrechtliche Folgen haben.

We reserve all rights for this technical document including possible grant of patent or registration of a utility model. Without our prior consent, this technical document must not be reproduced / translated or otherwise made accessible to third parties, and it must not be abusively exploited in any other way by the recipient or any third parties. Noncompliance will result in an obligation for compensation of any damage resulting therefrom and may have penal consequences.

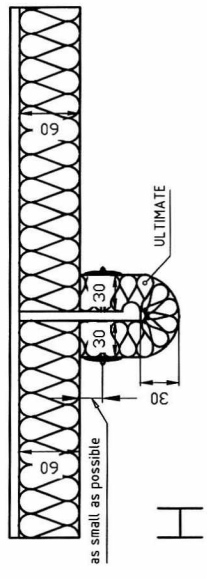
top view



section



section



LABS-1183  
  
 3/4

Possible ULTIMATE stiffener products in 30mm:

- U SeaProtect Slab 66
- U SeaProtect Slab 66 B-Al
- U SeaProtect Slab 66 G120
- U SeaProtect Slab 66 G420
- U SeaProtect Slab 66 X
- U SeaProtect W/ired Mat 66 AluI
- U SeaProtect Slab 66 AluI
- U SeaProtect Slab 66 B-GI
- U SeaProtect Slab 66 G220
- U SeaProtect Slab 66 V1
- U SeaProtect W/ired Mat 66
- U SeaProtect W/ired Mat 66 V1

Drawing for EC-type examination (Modul B) Certificate

Rev.04 2010\_04\_14  
 changes: added new mineralwool types  
 Rev.05 2015\_06\_24  
 changes: new product names

Für diese technische Unterlage behalten wir uns alle Rechte vor, auch für den Fall der Patentierung oder Gebrauchsmustererteilung. Ohne unsere vorherige Zustimmung darf diese technische Unterlage weder vervielfältigt noch Dritten zugänglich gemacht werden und sie darf durch den Empfänger oder Dritte auch nicht in anderer Weise missbräuchlich verwendet werden. Zuwiderhandlungen verpflichten zu Schadensersatz und können strafrechtliche Folgen haben.  
 We reserve all rights for this technical document including possible grant of patent or registration of a utility model. Without our prior consent, this technical document must not be reproduced / translated or in any other way be made accessible to third parties. Non-compliance will result in an obligation for compensation of any damage resulting therefrom and may have patent consequences.

**ISOVER**

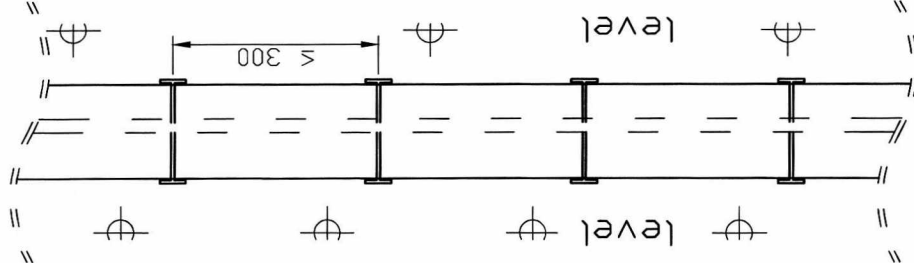
SAINT-GOBAIN ISOVER

A30 Bulkhead, Steel - Construction 2  
 ULTIMATE Marine 36 / 60mm - 66 / 30mm  
 General Application - Fire against either side

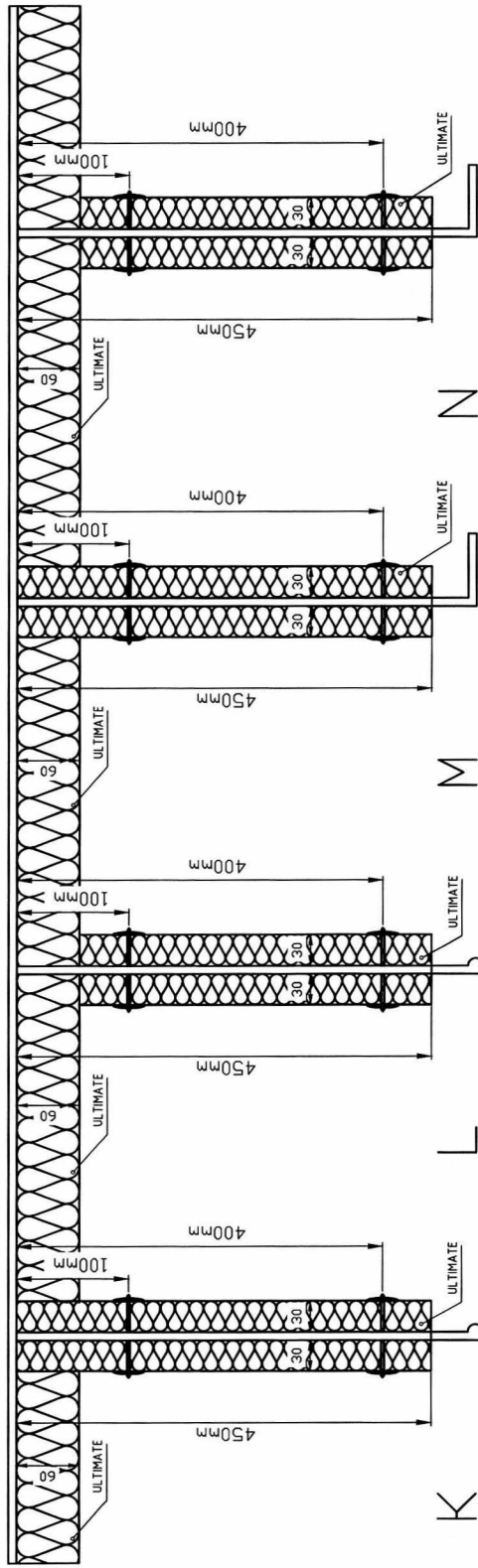
Mafstab / Scale	Gezeichnet / Drawn	Datum / Date	Klass. Nr. / Class. No.	Zeichnung Nr. / Drawing No.	Index
	A. Köhler	24.06.2015		AK2224	3/4



top view



section



stiffener bigger than 450mm

LAGS-183



1/4

Possible ULTIMATE

stiffener products in 30mm:

- U SeaProtect Slab 66
- U SeaProtect Slab 66 B-Al
- U SeaProtect Slab 66 G120
- U SeaProtect Slab 66 G420
- U SeaProtect Slab 66 X
- U SeaProtect Wired Mat 66 Alu1
- U SeaProtect Slab 66 Alu1
- U SeaProtect Slab 66 B-GI
- U SeaProtect Slab 66 G220
- U SeaProtect Slab 66 V1
- U SeaProtect Wired Mat 66
- U SeaProtect Wired Mat 66 V1

Drawing for EC-type  
examination (Modul B)  
Certificate

Rev.04 2010\_04\_14  
changes: added new  
mineralwool types  
Rev.05 2015\_06\_24  
changes: new product  
names

Für diese technische Unterlage behalten wir uns alle Rechte vor, auch für den Fall der Patentierung oder Gebrauchsmusteranmeldung. Ohne unsere vorherige Zustimmung darf diese technische Unterlage weder vervielfältigt noch Dritten zugänglich gemacht werden und sie darf durch den Empfänger oder Dritte auch nicht in andere Weise missbräuchlich verwendet werden. Zuwiderhandlungen verpflichten zu Schadensersatz und können strafrechtliche Folgen haben.  
We reserve all rights for this technical document including possible grant of patent or registration of a utility model. Without our prior consent, this technical document must not be reproduced / copied nor made available to third parties, and it must not be abusively exploited in any other way by the recipient or any third parties. Noncompliance will result in an obligation for compensation and may have penal consequences.

**ISOVER**

SAINT-GOBAIN ISOVER

A30 Bulkhead, Steel - Construction 2  
ULTIMATE Marine 36 / 60mm - 66 / 30mm  
General Application - Fire against either side

Maßstab / Scale	Gerechtheit / Drawn	Datum / Date	Klass. Nr. / Class. No.	Zeichnung Nr. / Drawing No.	Index
	A. Köhler	24.06.2015		AK2224	4/4